



Board of Directors

President:

James LaRegina, P.G.

Herbert, Rowland & Grubic, Inc.
jlairegina@hr-g-inc.com

President Elect:

Jeffery L. Leberfingher, P.G.

ARM Group, Inc.
jleberfingher@armgeophysics.net

Immediate Past President:

David B. Farrington, P.G.

Brickhouse Environmental
dfarrington@brickhouse-environmental.com

Permanent Director:

Richard E. Wright, P.G.

R. E. Wright, P.G., LLC
rewrightpg@comcast.net

Board Members:

Dennis R. Bell, Jr., P.G.

Skelly and Loy, Inc.
dbell@skellyloy.com

Dan A. Billman, P.G.

Billman Geologic Consultants, Inc.
danaret@zoominternet.net

Daniel Erdman, P.G.

Keystone E-Sciences Group, Inc.
dlerdman@keystoneESG.com

Valerie Holliday, P.G.

GeoLogos, LLC
vholliday5@comcast.net

Kelly Lee Kinkaid, P.G.

Liberty Environmental, Inc.
kkinkaid@libertyenviro.com

Jennifer L. O'Reilly, P.G.

Groundwater & Environmental Svcs, Inc.
joreilly@gesonline.com

Roger D. Moose, P.G.

Gannett Fleming, Inc.
rmoose@GFNET.com

Larry F. Roach, P.G.

Groundwater Sciences Corporation
lroach@groundwatersciences.com

Louis F. Vittorio, Jr., P.G.

EarthRes Group, Inc.
lvittorio@earthres.com

Jeffery K. Walsh, P.G.

Penn E & R, Inc.
jkw@penn-er.com

Donald R. Wagner, P.G.

Stevens & Lee, P.C.
drw@stevenslee.com

James D. Young, P.G.

EA Engineering, Science, and Technology, Inc.
jyoung@eaest.com

Donald Zuch, P.G.

HullGEC & Associates, Inc.
dzuch@hullinc.com

General Information:

info@pcpg.org



Can you identify this feature? See page 11.

this issue

Continuing Ed Requirements – In Effect Now **P.2**

Upcoming Events **P.5**

PCPG Issues Marcellus Position Statement **P.6**

Spring Science Fair Results **P.10**

News from the Penna. Geological Survey **P.13**

Message from the President

The months of June 2010 and August 2011 should prove interesting for PCPG. By now you should have heard that continuing education (CE) requirements went into effect in late May. We have already been fielding our share of calls asking, "What do I need for renewal in September 2011?" and we welcome those calls, because PCPG exists to serve the needs of Pennsylvania's Professional Geologists.

And come August 2011, I am sure we will see an increased number of calls and caller urgency when folks receive their license renewal notices and their need to affirm they have the required number of credit hours. So to avoid or minimize any surprises next September, PCPG will continue to get the message out that CE requirements are in effect now, and will keep you apprised as CE regulations are developed and promulgated. For more information about the CE requirements and other key provisions contained in Act 25 of 2010, please read Don Wagner's article on page 2.

This is a good time to remind folks who PCPG is and what we do. Foremost, PCPG does not issue licenses. We still get calls asking about the status of the caller's license or renewal application. Once a person passes the PG exam, the PG license is issued by Pennsylvania's State Registration Board for Professional Engineers, Land Surveyors and Geologists within the Bureau of Professional and Occupational Affairs.

PCPG is a 501.C(6) non-profit organization. From our Mission Statement, PCPG *advances the practice of geology and allied science and the success of our members through advocacy, education, and networking.* We are not affiliated with State government in any way, including funding. We are funded entirely by member dues and training course revenue. Our Board of Directors and our various committees are all volunteers. Rose Jeffries, who has been with PCPG since its inception in 1989, is the friendly voice you hear when calling PCPG and is the driving force that ensures your training experience is the best it can be.



(continued on Page 14)

Mandatory Continuing Education Requirements Now In Effect!

- Donald R. Wagner, P.G. (Governmental Affairs Committee Chairperson)

On May 12, 2010, Governor Rendell signed Act 25 of 2010 into law. Act 25 amends the Engineer, Land Surveyor and Geologist Registration Law. The new law clarifies mandatory continuing education ("CE") requirements for professional engineers, geologists and land surveyors. Additionally, PCPG successfully inserted geologist-in-training provisions and a carry-over of up to 12 excess CE credits into the legislation.

Mandatory Continuing Education

Section 4.5 of Act 25 requires that a licensee complete 24 professional development hour ("PDH") units during the biennial renewal period as a condition for licensure renewal. One PDH equals 50 minutes of instruction or presentation relevant to professional practice, including law and ethics applicable to the profession. No credit is earned for practice building or office management instruction. Up to 12 excess PDH units can be carried forward to the next licensure period. **Section 5 of Act 25 requires that a licensee comply with the continuing education requirements during the current (2009-2011) renewal period and provides that the licensing board may begin denying licensure renewals during the 2011-2013 renewal period to any licensee that fails to accumulate the required 24 PDH units during the 2009-2011 cycle.**

In an e-newsletter sent to licensees on May 14, 2010, the State Registration Board for Engineers, Land Surveyors and Geologists (State Board) initially indicated it did not intend to deny licensure renewals beginning in the 2011-2013 renewal period. However, in a special notice posted to the Board's website on May 28, 2010, the Board reversed its position, advising that the May 14, 2010 information is out of date and should be disregarded. **The State Board advises that 24 PDH units will be required, "no ifs, ands or buts," by the September 30, 2011 renewal cycle.**

Any CE credits you have earned since October 1, 2009 go toward your 2009-2010 renewal period requirements. If you haven't yet started accumulating your mandatory CE credits, we urge you to start now. Visit PCPG's website at www.PCPG.org today and check out PCPG's available course offerings.

To ease the implementation of mandatory CE requirements for the 2011-2013 renewal cycle, the State Board is granting a moratorium from disciplinary action for anyone who has not completed all 24 PDH units by September 30, 2011, provided any and all PDH unit deficiencies are made up by April 1, 2012. The State Board also advises that any licensee failing to make up the PDH unit deficiencies by April 1, 2010 will face disciplinary action. It should be noted that deficiency credits will not be double-counted for purposes of meeting the 2011-2013 renewal period CE requirements.

PDH units may be earned from any of the following, provided they are relevant to professional practice: (i) successful completion of college courses (45 PDH units per semester hour or 30 PDH units per quarter hour); (ii) completion of continuing education courses (10 PDH units for each continuing education unit**); (iii) completion of correspondence, televised, videotaped and other short courses or tutorials (one PDH unit per hour); (iv) completion of seminars, employer-sponsored courses, workshops or professional or technical conferences (one PHD unit per hour); (v) teaching, presenting or instructing in any of the activities referenced in (i) through (iv) above (two PDH units per hour); (vi) authoring published papers, articles or books (10 PDH units per paper, published article or book); and (vii) obtaining patents (10 PDH units per patent).

Continuing education courses do not require preapproval by the State Board, though the Board may preapprove course providers. Also, credits earned in other jurisdictions can be used to meet the Pennsylvania

***Continuing education unit in this context is that which is defined in the NCEES Continuing Professional Competency Guidelines*

(continued on next page)



(continued from previous page)

CE requirements, provided the activity claimed otherwise complies with Act 25.

Licensees must maintain records sufficient to demonstrate compliance with the CE requirements. Required records include: (i) a log showing the type of activity claimed, sponsoring organization, location, duration, instructor's or speaker's name and PDH units earned; and (ii) attendance verification records such as completion certificate or other documentation supporting evidence of attendance. PCPG recommends that you maintain your personal CE log and keep it and your course certificates in a safe place.

The State Board has 18 months to promulgate CE regulations, but don't wait, as noted above, the mandatory CE requirements are in effect now.

Geologist-in-Training

Through PCPG's efforts, geologist-in-training provisions were inserted into Act 25. A geologist-in-training is a candidate for licensure as a professional geologist who has been granted a certificate as a geologist-in-training after successfully passing the required fundamentals of geology examination and who shall be eligible, upon completion of the requisite years of experience in geology under the supervision of a professional or similarly qualified geologist, for the final examination prescribed for licensure. A geology student that has completed two or more years of an approved geology program may sit for the fundamentals of geology examination if approved by the Board, but may not be certified as a geologist-in-training until after graduation from an approved geology program.

Pennsylvania Brownfields 2010

Promoting Partnerships Across the Commonwealth

September 28 & 29, 2010 ■ Holiday Inn Center City ■ Allentown, PA

The Commonwealth of Pennsylvania is pleased to announce the sixth-annual Pennsylvania Brownfields Conference, scheduled for September 28 and 29, 2010.

This year, we moved the Conference to the Lehigh Valley, where attendees will experience first hand the results of regional cooperation. A guided tour of the former Bethlehem Steel site (the largest privately-owned brownfields in the nation), another round of "Extreme Makeover - Brownfields Edition," and an outstanding program with industry experts promise to make this Conference the best yet!

For more information on this Conference, or to become an attendee, sponsor or exhibitor, please contact the Conference Manager at (717) 763-0930 or klougee@psats.org.

photo credit: Lehigh Valley Economic & Development Corporation



The Marcellus Shale -- On a First-Name Basis

- Dan Erdman, P.G., REA, LSRP and Valerie Holliday, P.G., C.P.G. (Marcellus Shale Sub-Committee members)

The Marcellus Shale is a natural gas-rich rock formation that underlies approximately two-thirds of the Commonwealth. Because of its enormous potential to hold an important role in meeting the future energy needs of the nation and the landscape changes that can accompany development of the play, this shale is becoming the rock formation of Pennsylvania called by its first name in circles beyond the geological community. Today, 'the Marcellus' is frequently heard in conversation among investors, regulators, environmental groups, homeowner associations, and municipal authorities.

But, why did a formation once considered too dense and impermeable ("tight") to produce significant quantities of gas become a common topic of conversation? Geologists have long known that the Marcellus could hold potentially large volumes of gas, but recovery of that gas was considered too difficult to be profitable. So how did a formation with an initially estimated 1.9 trillion cubic feet of recoverable gas (Milici et al, 2003) become a popular target now estimated to contain over 300 trillion cubic feet of recoverable gas (Engelder, 2008)? The answer, largely, is because it is only recently that the Marcellus can yield this gas. An innovative mixture of horizontal drilling and hydraulic fracturing technologies developed by Mitchell Energy was first used to recover gas from the Barnett Shale of Texas during the 1990s (Portfolio.com, 2010). The combined technologies were successfully applied to the Marcellus in Pennsylvania by Range Resources in 2003 (Harper, 2008), and the news spread. Before improvements in the technologies of hydraulic fracturing and horizontal drilling, extraction of gas from the Marcellus was not technically practical or economically viable throughout most of the Commonwealth.

An appreciation of how to get gas out of this tight formation begins with an understanding of how it got into such a tight spot in the first place. Oil and gas are generated from "source rocks" that contain high concentrations of organic matter. The Marcellus shale is known to be the source rock for oil and gas found in overlying reservoir rocks (Laughrey et al., 2004). Oil, then gas, results from chemical reactions in organic matter caused by progressive increases in pressure and temperature during rock burial. The chemical reactions ordinarily involve an increase in the pore space of the rock in which it forms. Pore space did not increase during burial of the Marcellus. Instead, the generation of hydrocarbons resulted in increased pore pressure that was eventually relieved through the formation of microcracks. As more hydrocarbons were generated, the cracks continued to grow and open into the natural fractures that now hold the target product. Consequently, the Marcellus is not just a source rock: it is also its own reservoir rock. However, the Marcellus typically shows a low degree of interconnectivity between the tiny gas-filled fractures, and it is a relatively thin formation. It thickens from less than 50 feet to 250 feet west to east (Milici, 2005), but also dips in an easterly direction and is typically found at depths ranging from 5000 to 8000 feet over much of the Commonwealth. Given these constraints, prospectors found it tough to produce enough gas from conventional vertical wells to cover their production costs. Thus, the Marcellus was essentially left alone for decades...until now.

The Barnett Shale of Texas has many of the same characteristics and challenges as the Marcellus, and has been a proving ground for more than a decade resulting in technological improvements in hydraulic fracturing and horizontal drilling that now help make the Marcellus a viable resource. Since the Marcellus has an estimated six to eight times more recoverable gas than the Barnett (ALL Consulting, 2008), it is reasonable to assume that 'the Marcellus' will remain on a first name basis in many circles for the foreseeable future.

Footnote: The references in this article along with more information on the subject matter discussed can be found in the PCPG Marcellus Shale Library located on our website ([PCPG - Marcellus Shale](#))



UPCOMING EVENTS

July 13, 2010

**Groundwater
Sampling Seminar**
Carlisle, PA

September 16, 2010

**3rd Quarter
PCPG Board Meeting**
Middletown, PA

September 23 – 25, 2010

**Field Conference of
Pennsylvania Geologists
A Tectonic Cross Section of
the Pennsylvania Piedmont**
Lancaster, PA
www.fcopg.org

September 28 - 29, 2010

**6th Annual Pennsylvania
Brownfields Conference**
Allentown, PA

[Link](#) for more information

Sept. 30 – Oct. 1, 2010

**Hydrogeology Refresher:
Basic and Advanced
Principles of Groundwater
Hydrogeology**
Pittsburgh, PA

October 5, 2010

Geomorphology
Malvern, PA

October 12, 2010

Surface Geophysics
Middletown, PA

November 3, 2010

**Act 2 Tool Kit:
Fate & Transport Modeling**
Pittsburgh, PA

Don't forget to check the
"Courses & Events" link on
PCPG's [home page](#)
frequently for up to date
information on upcoming
educational opportunities.

PCPG Education Committee Reports Many Opportunities to meet CE Requirements

- Jennifer L. O'Reilly, P.G. (Education Committee Chairperson)

The PCPG Education Committee has been busy rounding out our calendar of events for 2010 to ensure plenty of opportunities for members to meet their continuing education obligations. Thank you to everyone that helped to make the first half of the year so successful!

The inaugural Act 2 Toolkit course was held on March 31 in Malvern (Fate & Transport Modeling), and due to popular demand, we will be running this course again in Pittsburgh in November. We are also working on the course material for the next few courses in the Act 2 Toolkit series, including Environmental Statistics, Soil Gas & Vapor Intrusion, and Risk Assessment.

In addition to the annual PG Review Course and a Structural Geology course that were completed in February, PCPG also conducted a pair of seminars titled "USTIF 101: A Tank Owner's Guide to the USTIF Program" in both eastern and western Pennsylvania in March. These seminars were designed to present a detailed overview of the USTIF claim process to tank owners. We received very positive feedback and numerous requests from tank owners that would like additional guidance, so we are in the process of putting together a follow-up course that will focus on Chapter 245 compliance. This course is tentatively scheduled for March 2011. [Yes, we are already putting courses on the calendar for next year!]

PCPG will be offering a wide variety of technical courses throughout the remainder of 2010. In addition to the Borehole Geophysics course that is offered periodically (most recently in Pittsburgh earlier this month), we will be offering a Surface Geophysics course for the first time later this year in Middletown. In addition, we will repeat our two-day Hydrogeology course (this year it will be held in Pittsburgh), will offer a Geomorphology course (in Malvern), and plan to hold our Groundwater Sampling course in two locations (Carlisle and location yet to be determined in western PA).

We will also be offering a unique technical/networking session entitled, "The Law for Geologists/Geology for Attorneys," which will provide a forum for discussing of the overlap between our two professions, including technical presentations and practical examples. The session will allow participants the opportunity to present specific questions and offer discussion points with a focus on maximizing client value while working within the framework of the PA regulations. More information on this event will be coming out shortly, and it is expected to be held in multiple locations across the state.

We hope to see you at one of our upcoming programs. If you have any questions or course suggestions, please feel free to email me ([Jen O'Reilly E-mail](#)). For more information or to register for upcoming courses, please link on the "Courses and Events" tab of our [home page](#).



PCPG Issues Marcellus Shale Gas Position Statement

- From the PCPG website

Through the efforts of the PCPG's Board of Directors and Marcellus Shale Sub-committee, PCPG has penned a Marcellus shale position statement that was released on April 5, 2010. The preamble to this statement is provided below.

The Pennsylvania Council of Professional Geologists (PCPG) is a diverse group of licensed Professional Geologists and allied scientists with an overriding ideology of advocating the use of sound science in the: (a) formulation of public policy; (b) protection of human health and the environment; (c) establishment and evaluation of regulatory programs; and (d) the dissemination of accurate information. Early participation by Professional Geologists and allied scientists in evaluations and decisions involving natural resources facilitates sound scientific outcomes.

PCPG supports the responsible development of Pennsylvania's natural resources, including Marcellus shale gas, and has prepared this statement to provide a balanced review and discussion of Marcellus shale gas issues. This statement is also intended to dispel common misunderstandings, provide comments as to appropriate public and regulatory policy, from a technical and geologic perspective, and identify critical areas where additional information and study are needed. PCPG expects to periodically review and amend this statement as Marcellus shale gas exploration and development procedures evolve, and as geologic and technologic advances continue to change the exploration and production landscape across the Commonwealth of Pennsylvania and the Appalachian Basin.

To read the entire statement, including discussion of specific issues related to Marcellus shale drilling, completion and production, you can link to the full position statement at:

[PCPG - Marcellus Shale](#)

PCPG Launches New Website

- Jim Young, P.G. (PCPG Board Member)

PCPG is very pleased to announce the beginning of our new web presence. The address is the same (www.pcp.org) but the content is changing. Over the next few months, you will see increasing levels of practical, high-quality information. Most exciting, however, are the elements of the site that are geared toward your ability to manage your professional profile, both internally to other PCPG members, and externally to the internet community. We will contact our members soon to introduce these features.

During the redesign, we streamlined and organized the important information that we provide to our membership (and please know that much more content has been drafted and will be posted soon). Our intent is for this website to be the primary source of information relevant to current and future professional geologists and environmental scientists in Pennsylvania:

- **Licensing** - Upcoming educational requirements; upcoming certification of Geologists-In-Training (GITs); the process & requirements to become a PG; and the licensing law & related regulations
- **Education** - Professionally relevant courses and networking events; satisfy Professional Development Hour (PDH) requirements
- **Advocacy** – discussion of evolving topics relevant to PGs; updates regarding proposed legislation & regulations; opportunities to voice your opinion so PCPG can advocate on behalf of its membership



PCPG Participates in PEC Marcellus Shale Policy Conference

-Louis F. Vittorio, P.G. (PCPG Board Member)

PCPG was invited to provide a panelist at the Pennsylvania Environmental Council's (PEC's) Marcellus Shale Policy conference held on May 3rd and 4th, 2010 at Duquesne University in Pittsburgh, and Board member Louis Vittorio (EarthRes Group, Inc.) was selected to represent the organization. The purpose of the conference was to identify environmental issues associated with current and future Marcellus Shale development, assess Pennsylvania's current regulation and oversight, and generate recommendations for advancing a regulatory regime in Pennsylvania that is supportive of industry and protective of Pennsylvania's Citizens and environment. Information from the conference is available at: www.pecmarcellus.org. We encourage PCPG members to browse the site as there are many useful and informative links regarding current Marcellus issues.

The speakers and panelists at the conference included the top administrators in DEP and DCNR as well as industry groups, such as the Marcellus Shale Coalition, and environmental groups, such as the Nature Conservancy. It was great exposure for the PCPG membership to be represented at the conference and we are proud that PCPG continues to be tapped for expertise on geological and environmental issues affecting the Commonwealth. One of the first posts to the PEC conference web site was PCPG's Marcellus Shale Position statement.

The policy recommendations generated from the conference will be mainly related to water issues. Water use and treatment was the primary focus of discussion, while potential impacts to surface water and groundwater supplies were also a concern.

(continued on Page 8)



Simple | Powerful | Reliable

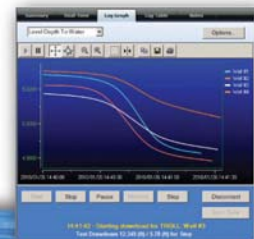
Virtual HERMIT® Kit Streamlines Pump Tests

The **Virtual HERMIT Aquifer Testing Kit** simplifies step-drawdown and constant-rate pump tests. Monitor all deployed **Level TROLL® 700** instruments with one system.

- Rent Virtual HERMIT software and customized instruments only from In-Situ® Rentals.
- Simultaneously configure, start, view, or stop all connected instruments.
- Step a test and capture pump and recovery data on the same log.
- Minimize data processing.

For more information, visit www.in-situ.com
and call us at **1.800.446.7488**
or call Rachel Bowen at **1.518.312.3860**

View results during test.



 **In-Situ Inc.**

Innovations in
Water Monitoring





KODIAK FIELD SERVICES

Environmental & Geotechnical



Direct-Push and Drilling Services

- Truck and Track-Mounted Rigs
- Low-Clearance & Limited Access Capabilities
- Hollow-Stem Auger Well Installation
- Prepacked Well Installation
- Direct-Push Dual-Tube Standard Penetration Testing - NO CUTTINGS!
- Ground Water Contaminant Vertical Profiling Using Real-Time In-Situ Low-Flow Sampling
- Mobile Subsurface Injection Unit - Chem-Ox, Bacteria, Oxygen - Releasing Compounds.
- Licensed in PA, OH, WV, VA, IL
- OSHA HAZWOPER, LPS, API, Defensive Driving Trained

Field Support Services

- Well Abandonment Services
- Site Clearing & Grubbing
- Site Mowing & Maintenance
- Excavation Services, Test-Pits, Etc.



Air Vacuum Extraction Services:

- Pre-Investigation Borehole Clearance
- Subsurface Utility Identification
- Utility Valve & Drop Box Cleanouts
- Superior Safety/Accident Record
- Job-Specific Insurance Limits Up to \$10M

Toll Free: 1-888-KODIAK-7 ~ www.kodiak7.com

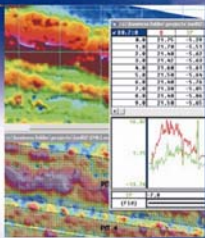
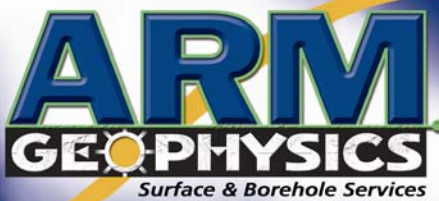
PCPG Participates in PEC Marcellus Shale Policy Conference

(continued from Page 7)

On the regulatory front John Hangar and John Quigley were present to generate support for a gas severance tax and passing of the new TDS and casing regulations. Executive summaries of these proposed regulations can be linked to at: [TDS Link](#) and [Casing Link](#). These topics were presented as priorities and Pennsylvania's Environmental Quality Board recently approved these proposals. In addition to water quality concerns, local community and infrastructure concerns were voiced by many. In areas where development of the shale is aggressively ongoing there is a strain on local resources – such as emergency services, and roads – without a money chain to assist in service and improvements. To that end DEP believes that approval and appropriation of a severance tax and active negotiation of fees between local communities and gas drillers can alleviate these concerns. Many gas companies are already taking responsibility for road repair and assisting with local community requests.

The overarching theme throughout the conference was that the Marcellus Shale gas play was here to stay. It is currently considered to be the largest gas play in the United States and the resulting benefits to Pennsylvania's economy (and citizens) will likely be enormous. There was also caution in the air, as many voiced that we did not want another post-coal type legacy resulting from extensive resource extraction. The Pennsylvania regulators were confident that - by applying the extensive knowledge of gas extraction history in PA coupled with adaptive management of existing regulations - the Marcellus resource can be utilized effectively, while at the same time allowing preservation and protection of Pennsylvania's unique environment.

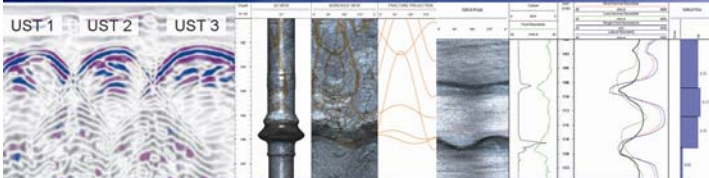




Looking for quality, cost-effective geophysical services?



ARM GEOPHYSICS provides state-of-the-art, high resolution geophysical services. ARM utilizes surface and borehole geophysical methods to characterize the subsurface for a variety of applications, including water resource, environmental, geotechnical, mining, oil and gas.



BENEFITS OF USING GEOPHYSICS

- Cost-effective solutions
- Reduce total project time
- Locate borings or excavations at strategic sites
- Extend subsurface information
- Improve confidence levels
- Minimize health risks
- Correlate information between borehole sites
- Minimize impact to site and operations



Call
717-508-0555
or visit
armgeophysics.net

CONGRATULATIONS!

PCPG sends congratulations and a PCPG thermal travel mug out to **Robert D. Pody**, senior hydrogeologist with the Susquehanna River Basin Commission. Bob correctly identified the image on Page 1 of our March 2010 Newsletter. The image, entitled "Eagle Rock Rocks," is of the Eagle Rock, an outcrop of conglomeratic sandstone of the Pottsville Formation at the Eagle Rock Resort near Hazleton, PA. Bob reports that there is a spectacular view down the axis of an anticlinal valley from the Eagle Rock and it is well worth the hike.

THANK YOU!

PCPG sends a belated "Thank You" to **Richard C. Balmer, P.G.** with the ARM Group, Inc. for the use of his "Eagle Rock Rocks," image in our March 2010 Newsletter. Rick is now searching his collection for other photos we might use in this newsletter.

If you have an image of geologic interest you would like to share, please [e-mail](#) it to me, and you might just see it in an upcoming issue of the PCPG Newsletter



SPRING SCIENCE FAIR REPORTS

Capital Area Science and Engineering Fair

Forty-two middle schools and high schools from throughout the Capital Region were represented at this year's Capital Area Science and Engineering Fair (CASEF), held in Harrisburg on March 4, 2010. Over 200 projects were presented in the junior and senior divisions, some of which included strong geologic and hydrogeologic components. A PCPG representative was present to do special judging for the category of most outstanding geology or hydrogeology projects in both the junior and senior divisions. Two winners were selected and each was presented with a check for \$200, funded by the PCPG and Groundwater Sciences Corporation.

The winner in the junior division PCPG award was Alex Metro from Hummelstown. His project was titled, "Do Earthquakes in Pennsylvania Occur More Frequently Around the Autumnal and Vernal Equinoxes and the Summer and Winter Solstices, or Are They Random?" Alex demonstrated not only a strong understanding of the causes of earthquakes and the astronomical concepts of equinoxes and solstices, but also strong skills in gathering and analyzing data. Although not part of his project, during the interview, he was able to provide an excellent discussion of the recent earthquakes in Chile and their relationship to the subduction zone along plate margins.



Photo above: Larry Roach presents CASEF Junior Division PCPG Award to Alex Metro of Hummelstown

The winner in the senior division was Douglas Rumbaugh of Millerstown. His project was titled, "Effects of Barriers on Groundwater Extractions." He used modeling software to create a model with a constant head boundary, a zero recharge boundary, an extraction well pumping at a continual rate and an area within the model field to be isolated because it was contaminated. He modeled various barriers around the contaminated area to determine what would be the most cost-effective way to limit flow from this area. He performed sensitivity analysis and had a keen understanding of the major elements that would affect groundwater flow in the area and the implications of the information produced by the sensitivity analysis. He demonstrated an impressive understanding of Darcy's Law and the basic underlying hydrogeologic conceptual framework for the model. *Congratulations to Alex and Douglas for a job well done!*

Delaware Valley Science Fair

The Delaware Valley Science Fair was held this past April with over 900 exhibitors. Judging for the PCPG award was done by Melissa Pitchford, Gary Kribbs, and Grover Emrich. This year's winner was Annabel Imbrie-Moore from St. Andrew's School in Middletown, DE. Her project title was "The Mystery of the 100,000 Year Ice Age Cycle. She related variations in the thickness-volume of glacial ice (obtained from Google) to variations in the world's temperature in the last million years. She found that there were 100,000 year cycles in temperature variations which were reflected in the thickness of the glacial ice.

This young woman not only is a high school sophomore, but is a great example of how intelligence, diligence and proper mentoring can result in great work. *Congratulations to Annabel for a job well done!*



Lancaster Area Science and Engineering Fair

The 57th North Museum Science and Engineering Fair was held on the campus of Franklin and Marshall College from March 23 through 25, 2010. Twenty-one public and private schools in Lancaster County were represented by 345 middle school and high school students, who displayed finished projects in 22 categories. In addition to the category awards, over 40 organizations sent representatives to judge and present auxiliary awards. A PCPG representative was present to judge the auxiliary award sponsored by PCPG.

This year's PCPG auxiliary award was presented to Ryan Ulrich, a 8th grade student of the Centerville Middle School. Ryan's project focused on the sedimentation and erosion problems from early agricultural practices in the Lancaster Valley. This project was a first for him, and his research found that his focus on sedimentation mechanisms could lead to a more in-depth research project in the future. *Congratulations to Ryan for a job well done!*

Were you able to guess the image on Page 1? It's the Arch Springs, located in Sinking Valley, Blair County. Found in the Loysburg Formation, its Pennsylvania's only natural limestone arch. The spring discharges an average of 8,000GPM, with a range of 2,000 to 30,000 GPM, making it Pennsylvania's 8th largest spring. You can learn more about the Arch Spring from the following field trip (see stop 2).

<http://www.dcnr.state.pa.us/topogeo/tbr/tbr.aspx>

GEOPHYSICS IS OUR ONLY BUSINESS!

WHEN COST MATTERS CALL US









DELTA Geophysics Inc.

Providing insight & solutions.

SERVICES:

Consider Delta Geophysics a strategic business partner on a mission to enhance your capabilities and competitive advantage by using the best techniques to address your site specific concerns & conditions.

-  GROUND PENETRATING RADAR
-  ELECTROMAGNETICS
-  SEISMIC
-  RESISTIVITY
-  BOREHOLE LOGGING
-  MAGNETICS

APPLICATIONS:

-  UST DETECTION
-  UTILITY LOCATING
-  BEDROCK PROFILING
-  SINKHOLE INVESTIGATION
-  LANDFILL DELINEATION
-  AND MUCH MORE!

To find out how we can help you, please contact Matthew Dilenno at 610-231-3701 x 19 or mdiianno@deltageophysics.com



DELTA Geophysics Inc.

738 Front Street, Catasauqua, PA 18032
Phone: (610) 231-3701
Fax: (610) 231-3703

www.deltageophysics.com



Reporting of Criminal Convictions and Professional Licensing

- Ted Tesler, P.G. (State Registration Board for Professional Engineers, Land Surveyors and Geologists)

Among our undergraduate and younger professional population there is a growing awareness of the lasting repercussions a DUI or other conviction can have on an applicant's ability to become professionally licensed. This is in part due to informational outreach and enforcement by the Pennsylvania Liquor Control Board, State Police, and other public agencies.

From the perspective of the State Registration Board, a conviction immediately questions the applicant's judgment and ability to demonstrate "good moral character". It is the Board's practice to allow an applicant to sit for examination only after their sentence, restitution and probationary conditions have been fully satisfied. This typically involves providing the Board with appropriate discharge certification(s) from the sentencing court. So, while these convictions will often delay applicants, it is still possible to obtain a license once all sentence requirements have been completed and matters of moral character addressed. Certainly, we have all made mistakes and the Board recognizes that young people today can have a difficult time making it through college and young adulthood incident free. To paraphrase Joe Paterno, immaturity is a condition for which there is a cure.

As for our older and wiser professionals who have already become licensed, the renewal process asks:

"Since your initial application or last renewal, whichever is later, have you been convicted, pleaded guilty or entered a plea of nolo contendere, or received probation without verdict to any crime, felony or misdemeanor, including any DUI/DWI, drug law violations, or are there any criminal charges pending and unresolved against you in any state or jurisdiction?"

When answering "yes", a written explanation is required, along with a certified copy of the legal documents. Not all convictions are grounds for disciplinary action, and a conviction that is not a felony and does not involve professional conduct activities is not always prosecuted before the Board. Because licensees have a property right to their professional license, the Commonwealth must renew a license no matter what is reported on the renewal form. When a renewal application discloses a conviction of a felony or of a misdemeanor involving the profession, including discipline by another licensing board, the reported conviction is forwarded to the complaints office for possible prosecution by the Commonwealth.

Reporting a conviction on your application or renewal does not mean that you will never be licensed or that your professional career is over. Above all be honest, as a conviction will ultimately come to light and a false or misrepresented statement on your application is often viewed as the greater sin by the Board.

CONGRATULATIONS!

PCPG sends congratulations to **Jeffrey K. Walsh**. Jeff was recently promoted to Vice President at Penn E&R located in Hatfield, PA.

If you have news that you would like to share regarding a member promotion or new position, please [e-mail me](#) the particulars, and you might just see it in an upcoming Newsletter.



elk
Environmental Services
experienced and equipped to respond
BERKS TRANSFER • DVC • EMPIRE • EMPIRE BUILDING PRODUCTS

1420 Clarion Street • Reading, PA 19601
Phone: 610-372-4760 • Fax: 610-372-4820
24 Hours: 1-800-851-7156

www.elkenv.com

- 24 Hour Emergency Response
- Waste Management
- Remediation
- Demolition
- Field Services & Industrial Cleaning
- Tank Management
- Civil Construction Services
- Lab Packing
- Training
- Permitting



News of the Pennsylvania Geological Survey

- John Harper, P.G. (*Pennsylvania Topographic and Geologic Survey*)



Water Wells – The Survey has issued a fact sheet, authored by Stuart Reese, containing guidelines for homeowners and contractors on the construction and maintenance of bedrock water wells, the most common type of private water well in Pennsylvania. The guidelines should go a long way toward providing better protection of private wells by instructing well owners on proper placement and construction. There are no state regulations concerning location, construction method, materials, yield, or water quality of private water wells. However, state law DOES require drillers to have a Water Well Driller's license and a valid rig permit, and drillers must provide a copy of the Water Well Completion Report describing where, when, and how the well was constructed to both the Survey and the homeowner. Therefore, private water well owners become the caretakers of their own water supplies. The guidelines address siting, construction, well testing, and best practices in an easy-to-read and understandable format. A copy of the guideline can be downloaded from the Survey's website at: www.dcnr.state.pa.us/topogeo/groundwater/water_wells_fs_2010.pdf. Contact [Stuart Reese](#) for more information.

New Bedrock and Surficial Geologic Maps – Since the beginning of 2010, the Survey has released three new open-file bedrock geologic maps and four open-file surficial geologic maps in the eastern half of Pennsylvania. Bedrock maps include the McVeytown quadrangle in Juniata and Mifflin Counties (by Tom McElroy and Don Hoskins), the Kirkwood and Pennsylvania portion of the Rising Sun quadrangles in Chester and Lancaster Counties (by Gale Blackmer, Howell Bosbyshell, and Steve Shank), and the Mansfield quad in Tioga County (by Brett McLaurin of Bloomsburg University). Surficial geologic maps include the Pohopoco Mountain quad in Carbon and Monroe Counties, Leighton quad in Carbon and Lehigh Counties, and the Harford and Thompson quads in Susquehanna County (all by Duane Braun, Professor Emeritus at Bloomsburg University). All of these maps can be accessed at www.dcnr.state.pa.us/topogeo/gismaps/index.aspx. Contact [Gale Blackmer](#) for more information.

New Groundwater Report – The Survey, in cooperation with the U. S. Geological Survey (USGS), has released Water Resource Report 70, *Summary of Groundwater-Recharge Estimates for Pennsylvania*. The report is 18 pages long and includes 6 page-sized plates. It is available online at www.dcnr.state.pa.us/topogeo/pub/water/w070.aspx. This report, written by Stuart Reese and Dennis Risser of the USGS, provides an overview of processes affecting recharge in Pennsylvania and summarizes estimates of recharge rates from studies at various scales. Included maps show the main factors that affect recharge and provide additional information about the spatial distribution of recharge across the state. The maps present the patterns of precipitation, temperature, and winds across the state, and show the spatial variability of recharge as a percent of precipitation. National, statewide, regional, and local values of recharge, based on numerous studies, were compiled to allow comparison of estimates from various sources. Together these plates provide a synopsis of groundwater-recharge estimations and factors in Pennsylvania. Contact [Stuart Reese](#) for more information.

PAMAP Data – The Survey recently released new PAMAP data on the Pennsylvania Spatial Data Access (PASDA) website. Orthoimagery and LiDAR elevation data collected early in 2008 and recently processed for quality assurance are now available for Dauphin, York, Lancaster, and Lebanon Counties. The LiDAR elevation data, especially, has many applications, and the Survey is proud to provide it to the citizens of Pennsylvania for whatever use they can find for it. The new PAMAP data can be accessed and downloaded from www.pasda.psu.edu. Contact [Helen Delano](#) for more information.



President's Message

(continued from page 1)

PCPG members automatically receive updates concerning key legislative issues as well as discounted educational courses and seminars that provide the needed CEUs.

If you are reading this and are not a PCPG member, please visit our new website (still found at www.pcp.org) and learn how you can join our organization.

Jim LaRegina, P.G.
President

DEADLINE FOR 3rd QUARTER 2010 NEWSLETTER IS SEPTEMBER 1, 2010

For more information, contact our PCPG Newsletter Editor and Communications Committee Chairperson, Kelly Lee Kinkaid, P.G., by [E-mail](mailto:kelly@pcpg.org) or by telephone at 610-375-9301.

2010 PCPG MEMBER AD RATES

(Rates are listed as amount per issue)

Size	Commitment:	1x	4x
1/2 Page		\$225	\$150
1/4 Page		\$140	\$95
Business Card (H or V)		\$75	\$50

2010 PCPG NON-MEMBER AD RATES

(Rates are listed as amount per issue)

Size	Commitment:	1x	4x
1/2 Page		\$300	\$240
1/4 Page		\$185	\$150
Business Card (H or V)		\$100	\$80

ADVERTISERS: Please remit payment to PCPG, 116 Forest Drive, Camp Hill, PA 17011



Pennsylvania Council of Professional Geologists

116 Forest Drive
Camp Hill, PA 17011
www.pcp.org